

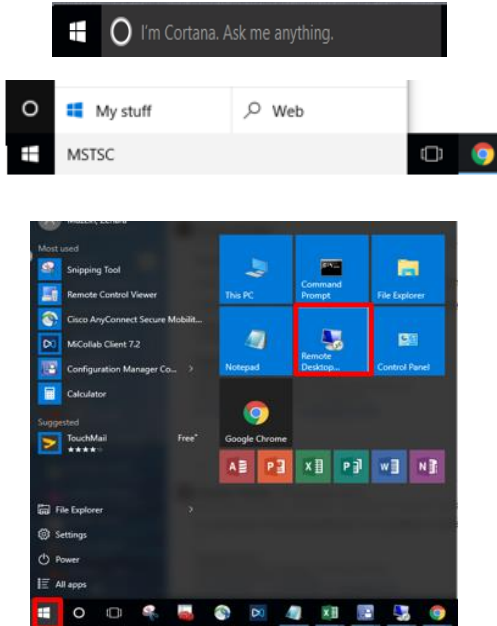
Turning off TS-GW Access

Windows 7/Windows 10

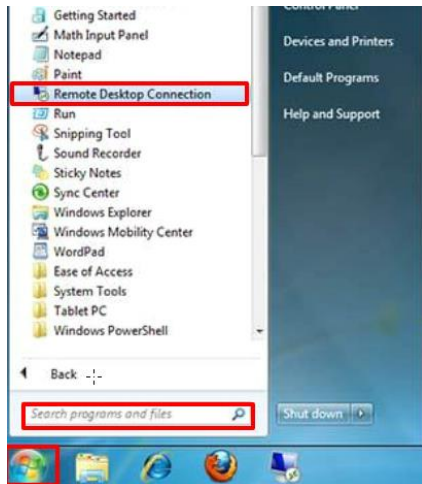
How To Turn Off TS-GW Access

1. Open Remote Desktop Connection by typing **MSTSC** or **Remote Desktop** in the Cortana search window.

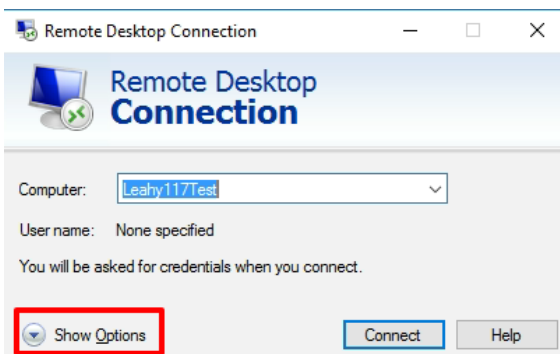
- Windows 10



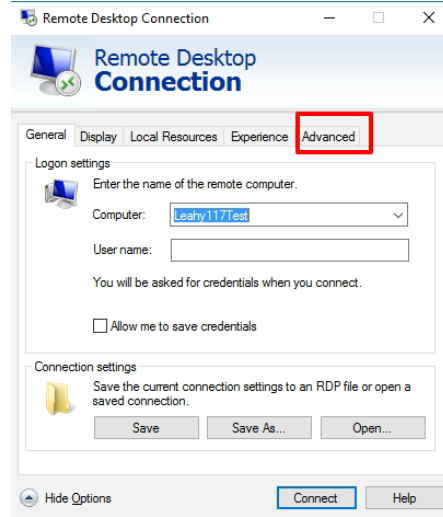
- Windows 7



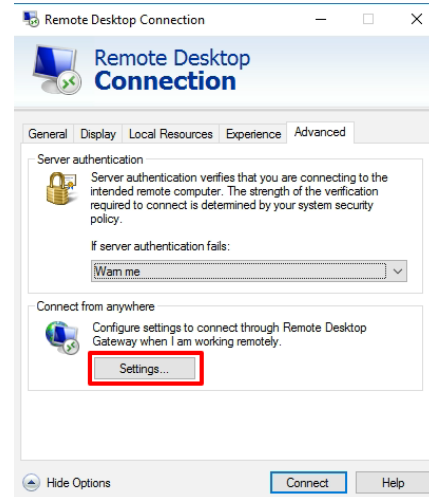
2. Click on the down arrow to **Show Options**.



3. Select the last tab **Advanced**



4. Under Connect from anywhere – Click on **Settings...**



5. Under Connection settings select **Automatically detect RD Gateway server settings** then **OK**

