

# Connecting to Remote Desktop Services from Windows 10



With Remote Desktop Connection, you can connect to a computer running Windows from another computer running Windows that's connected to the same network or to the Internet. For example, you can use all of your work computer's programs, files, and network resources from your home computer, and it's just like you're sitting in front of your computer at work.

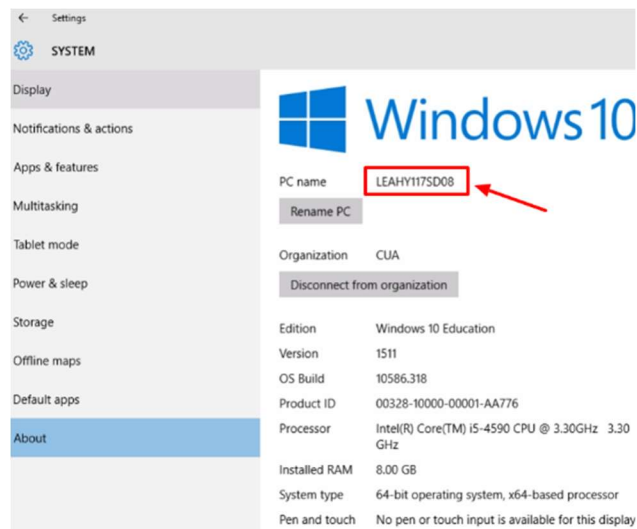
## To connect to a remote computer,

- The remote computer must be turned on,
- It must have a network connection,
- Remote Desktop must be enabled,
- You must have network access to the remote computer (this should be through VPN),
- and you must have permission to connect.

Before you start a connection, it's a good idea to look up the name of the computer you're connecting to

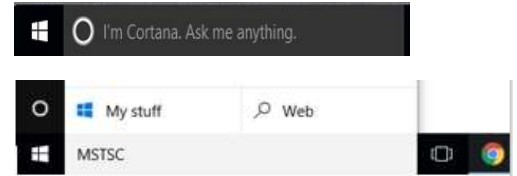
## How to Look Up Remote Computer Name

- 1) Click on **Start** button 
- 2) Select **Settings**  

- 3) In **System**, scroll down to **About**.
- 4) Beside **PC name**, you can find your computer name (if your computer is on a domain)



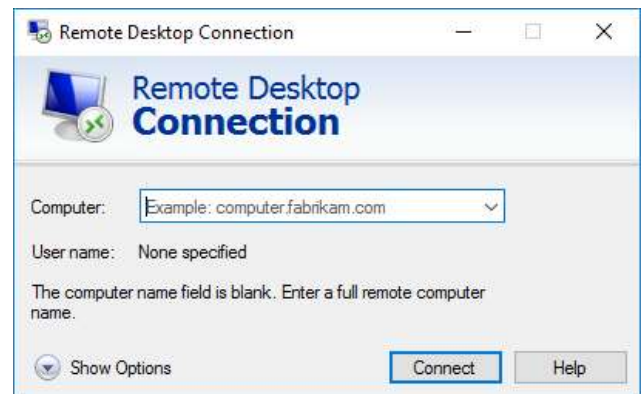
## Connecting to the Remote Computer

- 1) Open Remote Desktop Connection by typing **MSTSC** in the Cortana search window.



- 2) In the **Remote Desktop Connection** box, type the name of the computer that you want to connect to.

**\*\*See: [How to Look Up Remote Computer Name](#)\*\***



- 3) Enter your **CUA** Windows Credentials to login to the **Remote Desktop**

## CUAUser Name

